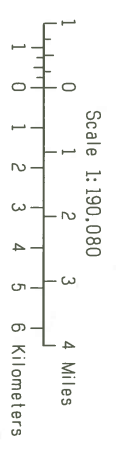


U.S. DEPARTMENT OF AGRICULTURE
 SOIL CONSERVATION SERVICE
 OHIO DEPARTMENT OF NATURAL RESOURCES
 DIVISION OF LANDS AND SOIL
 OHIO AGRICULTURAL RESEARCH AND DEVELOPMENT CENTER

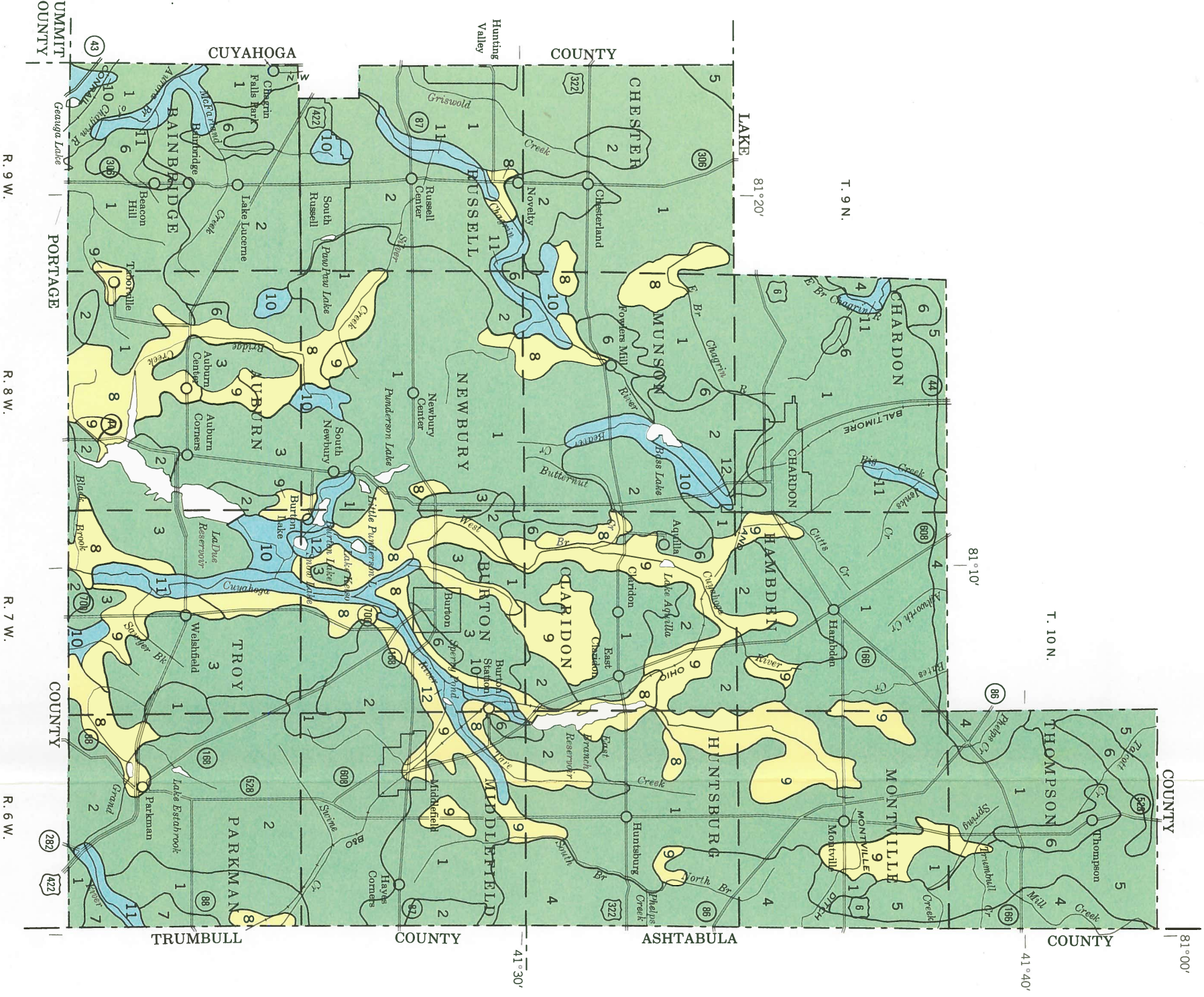
GENERAL SOIL MAP GAUGA COUNTY, OHIO



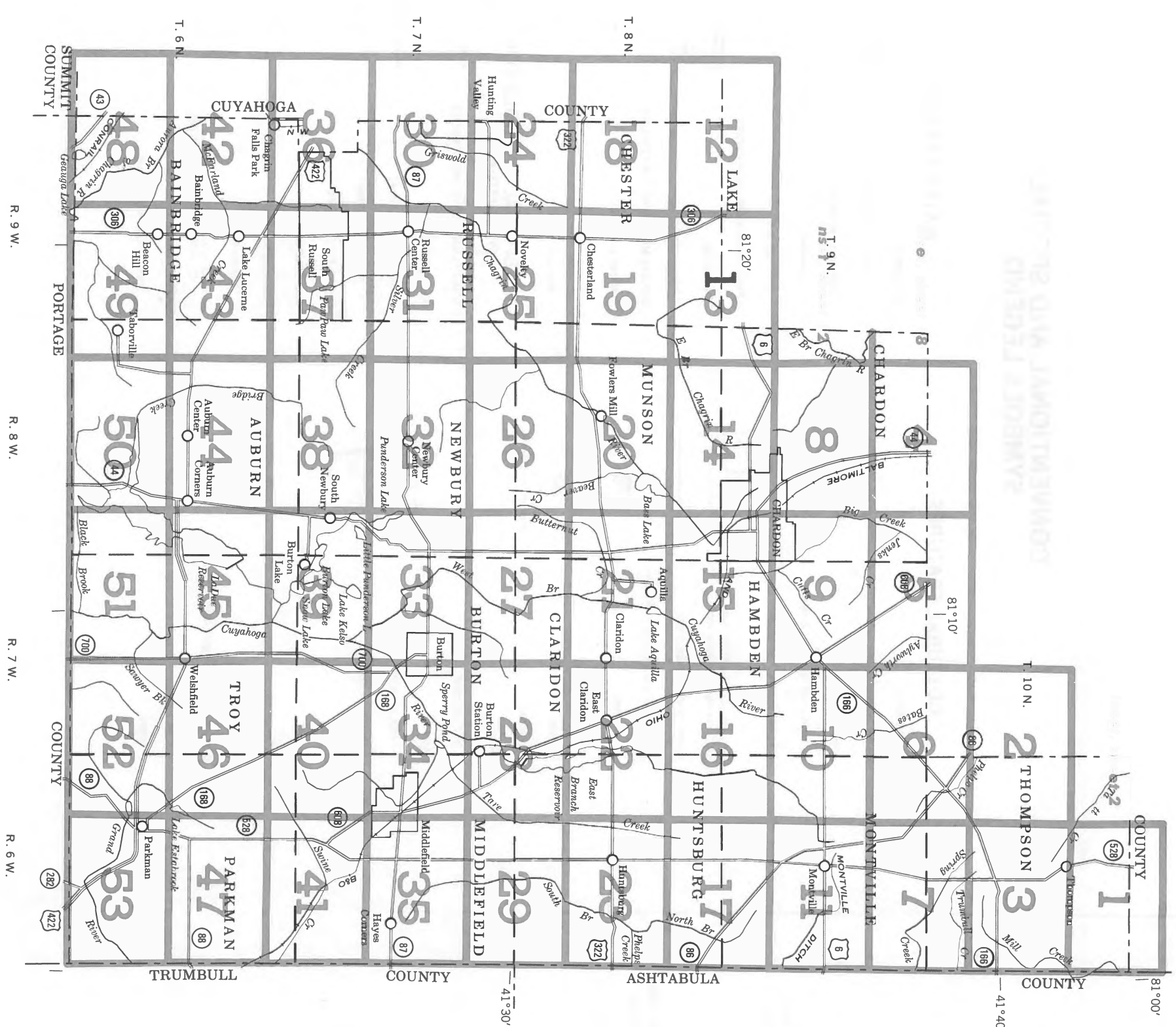
SOIL LEGEND

- 1** Mahoning-Elsworth association: Deep, nearly level to very steep, somewhat poorly drained and moderately well drained soils that formed in moderately fine textured glacial till
- 2** Madsworth-Rittman association: Deep, nearly level to very steep, somewhat poorly drained and moderately well drained soils that formed in medium textured glacial till
- 3** Garfield-Ravenna association: Nearly level to sloping, moderately well drained and somewhat poorly drained soils that formed in medium and moderately coarse textured glacial till
- 4** Platea-Sherfield association: Nearly level and gently sloping, somewhat poorly drained and poorly drained soils that formed in medium and moderately fine textured glacial till
- 5** Darien-Mahoning association: Deep, nearly level to sloping, somewhat poorly drained soils that formed in medium and moderately fine textured glacial till
- 6** Londonville-Lordstown-Mitwanga association: Moderately deep, nearly level to very steep, well drained and somewhat poorly drained soils that formed in moderately fine to moderately coarse textured glacial till and in residuum of sandstone bedrock
- 7** Geeburg association: Deep, gently sloping and sloping, moderately well drained soils that formed in fine textured glacial till
- SOILS ON STREAM TERRACES, OUTFWASH PLAINS, KAMES, AND UPLANDS**
- 8** Chili-Oshesno association: Nearly level to very steep, well drained soils that formed in medium, moderately coarse, and coarse textured glacial outwash
- 9** Haskins-Jintown-Damascus association: Nearly level and gently sloping, somewhat poorly drained and poorly drained soils that formed in medium to coarse textured glacial outwash and in the underlying moderately fine and fine textured glacial till or lacustrine material
- SOILS ON TERRACES, FLOOD PLAINS, UPLANDS, AND IN BASINS OF FORMER GLACIAL LAKES**
- 10** Sabring-Fitchville association: Nearly level and gently sloping, poorly drained and somewhat poorly drained soils that formed in medium and moderately fine textured lake sediments
- 11** Holly-Orrville-Tiega association: Nearly level, poorly drained, somewhat poorly drained, and well drained soils that formed in moderately fine to moderately coarse textured alluvium
- 12** Carliste association: Level, very poorly drained soils that formed in organic deposits

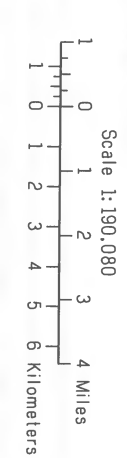
Compiled 1981



Each area outlined on this map consists of more than one kind of soil. The map is thus meant for general planning rather than a basis for decisions on the use of specific tracts.



INDEX TO MAP SHEETS
GEAUGA COUNTY, OHIO



CONVENTIONAL AND SPECIAL SYMBOLS LEGEND

SOIL LEGEND

Map symbols consist of a combination of letters or of letters and a number. The first capital letter is the initial one of the map unit name. The lowercase letter that follows separates map units having names that begin with the same letter, except that it does not separate sloping or eroded phases. The second capital letter indicates the class of slope. Symbols without a slope letter are for nearly level soils or miscellaneous areas. A final number of 2 indicates that the soil is eroded.

SYMBOL	NAME	SYMBOL	NAME
BgB	Bogart loam, 2 to 6 percent slopes	LrC	Lordstown loam, 6 to 12 percent slopes
BrF	Brecksville silt loam, 25 to 70 percent slopes	LxD	Lordstown-Rock outcrop complex, 12 to 18 percent slopes
Ca	Canadice silt loam	LxF	Lordstown-Rock outcrop complex, 18 to 70 percent slopes
CA	Caneadea silt loam, 0 to 2 percent slopes	LyB	Loudonville silt loam, 2 to 6 percent slopes
CcB	Caneadea silt loam, 2 to 6 percent slopes	LyC	Loudonville silt loam, 6 to 12 percent slopes
CdB	Canfield silt loam, 2 to 6 percent slopes	MgA	Mahoning silt loam, 0 to 2 percent slopes
CdC	Canfield silt loam, 6 to 12 percent slopes	MgB	Mahoning silt loam, 2 to 6 percent slopes
Cf	Carlisle muck, ponded	MgC	Mahoning silt loam, 6 to 12 percent slopes
CnA	Chili loam, 0 to 2 percent slopes	MsA	Mahoning silt loam, shale substratum, 0 to 2 percent slopes
CnB	Chili loam, 2 to 6 percent slopes	MsB	Mahoning silt loam, shale substratum, 2 to 6 percent slopes
CnC	Chili loam, 6 to 12 percent slopes	MtA	Mitiwanga silt loam, 0 to 3 percent slopes
CoD2	Chili gravelly loam, 12 to 18 percent slopes, eroded	Or	Orrville silt loam, frequently flooded
CyD	Chili-Oshtemo complex, 6 to 18 percent slopes	OsB	Oshtemo sandy loam, 2 to 6 percent slopes
CyF	Chili-Oshtemo complex, 25 to 50 percent slopes	Osc	Oshtemo sandy loam, 6 to 12 percent slopes
Da	Damascus silt loam	Pg	Pits, gravel
DrA	Darien silt loam, bedrock substratum, 0 to 2 percent slopes	Pq	Pits, quarry
DrB	Darien silt loam, bedrock substratum, 2 to 6 percent slopes	PsA	Platea silt loam, 0 to 2 percent slopes
EHB	Ellsworth silt loam, 2 to 6 percent slopes	PsB	Platea silt loam, 2 to 6 percent slopes
EHB2	Ellsworth silt loam, 2 to 6 percent slopes, eroded	ReA	Ravenna silt loam, 0 to 2 percent slopes
ENC	Ellsworth silt loam, 6 to 12 percent slopes	ReB	Ravenna silt loam, 2 to 6 percent slopes
ENC2	Ellsworth silt loam, 6 to 12 percent slopes, eroded	RmB	Rawson loam, 2 to 6 percent slopes
EHd	Ellsworth silt loam, 12 to 18 percent slopes	RdB	Rittman silt loam, 2 to 6 percent slopes
END2	Ellsworth silt loam, 12 to 18 percent slopes, eroded	RSc	Rittman silt loam, 6 to 12 percent slopes
EHE	Ellsworth silt loam, 18 to 25 percent slopes	RSc2	Rittman silt loam, 6 to 12 percent slopes, eroded
EHF	Ellsworth silt loam, 25 to 50 percent slopes	RSD	Rittman silt loam, 12 to 18 percent slopes
EmC	Ellsworth silt loam, shale substratum, 6 to 12 percent slopes	RSE	Rittman silt loam, 18 to 25 percent slopes
EmD	Ellsworth silt loam, shale substratum, 12 to 18 percent slopes	Rsf	Rittman silt loam, 25 to 50 percent slopes
FcA	Fitchville silt loam, 0 to 2 percent slopes	Sb	Sebring silt loam
FcB	Fitchville silt loam, 2 to 6 percent slopes	Sf	Sheffield silt loam
Gbb	Geeburg silt loam, 2 to 6 percent slopes	Tg	Tioga loam, frequently flooded
GbC	Geeburg silt loam, 6 to 12 percent slopes	Ud	Udothents, loamy
GIB	Glenford silt loam, 2 to 6 percent slopes	Ur	Urban land
GIC	Glenford silt loam, 6 to 12 percent slopes	Wa	Wabasha silty clay loam, ponded
HSA	Haskins loam, 0 to 2 percent slopes	WbA	Wadsworth silt loam, 0 to 2 percent slopes
HsB	Haskins loam, 2 to 6 percent slopes	WbB	Wadsworth silt loam, 2 to 6 percent slopes
Ho	Holly silt loam, frequently flooded	Wc	Walkill silt loam, ponded
JfA	Jimtown silt loam, 0 to 3 percent slopes	Wt	Willette muck, ponded
LrB	Lordstown loam, 2 to 6 percent slopes	WuD	Wooster silt loam, 12 to 18 percent slopes

CULTURAL FEATURES

BOUNDARIES	SYMBOL	NAME
County or parish	— — — — —	
Minor civil division	- - - - -	
Field sheet matchline & neatline	— — — — —	
AD HOC BOUNDARY (label)	— — — — —	
Small airport, airfield, park, oilfield, cemetery, or flood pool		
STATE COORDINATE TICK	— — — — —	

ROAD EMBLEMS & DESIGNATIONS

ROAD EMBLEMS & DESIGNATIONS	SYMBOL	NAME
Interstate		
Federal		
State		
RAILROAD	— — — — —	

LEVEES

LEVEES	SYMBOL	NAME
Without road	

DAMS

DAMS	SYMBOL	NAME
Large (to scale)		
Medium or small		

PITS

PITS	SYMBOL	NAME
Gravel pit		
Mine or quarry		

MISCELLANEOUS CULTURAL FEATURES

MISCELLANEOUS CULTURAL FEATURES	SYMBOL	NAME
Church		
School		

WATER FEATURES

DRAINAGE	SYMBOL	NAME
Perennial, double line		
Perennial, single line		
Intermittent		
Drainage end		

LAKES, PONDS AND RESERVOIRS

LAKES, PONDS AND RESERVOIRS	SYMBOL	NAME
Perennial		
Intermittent		

MISCELLANEOUS WATER FEATURES

MISCELLANEOUS WATER FEATURES	SYMBOL	NAME
Marsh or swamp		
Spring		
Wet spot		

SPECIAL SYMBOLS FOR SOIL SURVEY

SPECIAL SYMBOLS FOR SOIL SURVEY	SYMBOL	NAME
SOIL DELINEATIONS AND SYMBOLS		

ESCARPMENTS

ESCARPMENTS	SYMBOL	NAME
Bedrock (points down slope)		
Other than bedrock (points down slope)		

SHORT STEEP SLOPE

SHORT STEEP SLOPE	SYMBOL	NAME
SOIL SAMPLE SITE		

MISCELLANEOUS

MISCELLANEOUS	SYMBOL	NAME
Gravelly spot		
Rock outcrop (includes sandstone and shale)		
Sandy spot		
Stony spot, very stony spot		

This map is compiled on 1977 aerial photography by Department of Agriculture, Soil Conservation Service and cooperating agencies. Coordinate grid ticks and markers, if shown, are approximately positioned.

(Joins inset, sheet 2)

T. 10 N.

755 000 FEET

2 390 000 FEET



GEAUGA COUNTY, OHIO - SHEET NUMBER 1

2 405 000 FEET

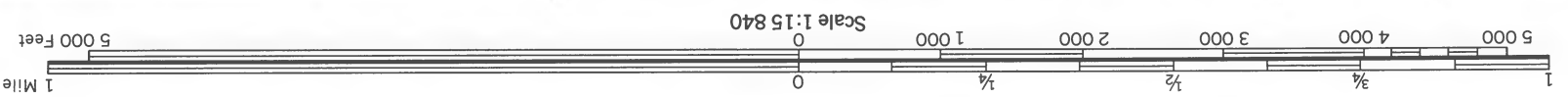
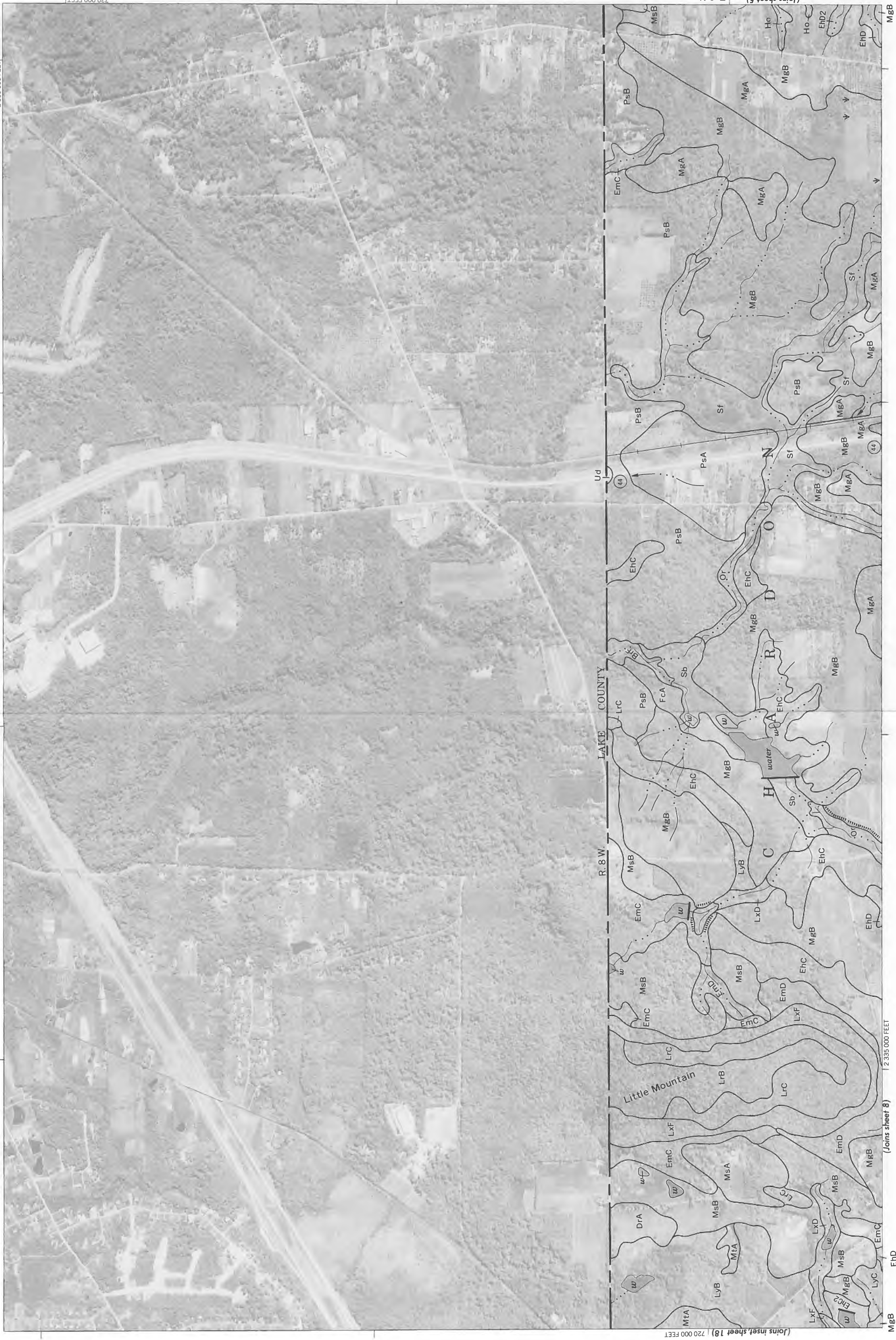
(Joins sheet 3)

745 000 FEET



1

2 350 000 FEET



Joins inset, sheet 18 720 000 FEET

Joins sheet 8

2 335 000 FEET

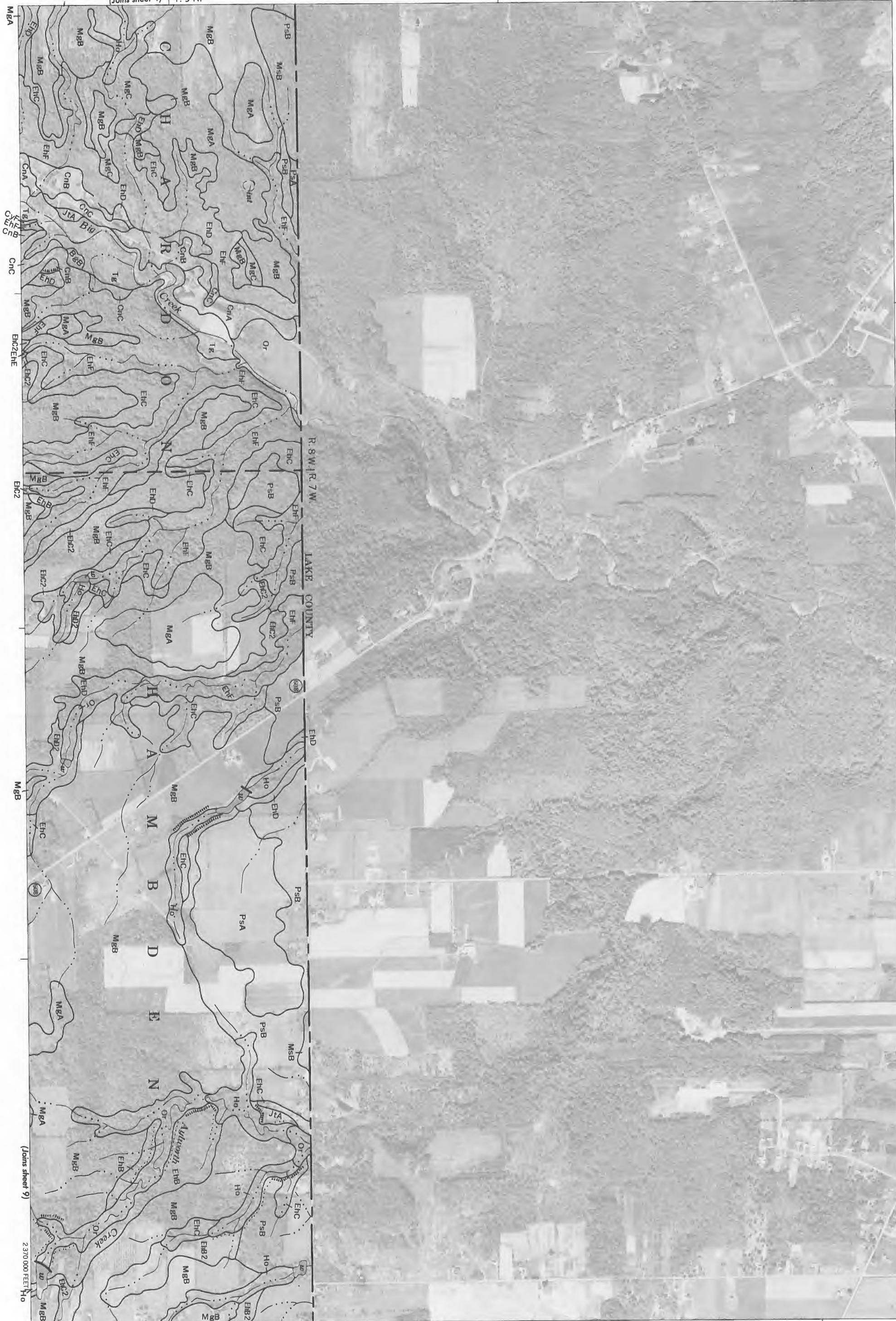
Joins sheet 5
 T. 9 N.

This map is compiled on 1977 aerial photography by the
 Department of Agriculture, Soil Conservation Service and cooperating agencies.
 Coordinate grid ticks and labels, if shown, are approximately positioned.

This map is compiled on 1977 aerial photography by the U.S. Department of Agriculture, Soil Conservation Service and cooperating agencies. Coordinate grid ticks and land divisions, if shown, are approximately positioned.

730 000 FEET

(Joins sheet 4) T. 9 N.

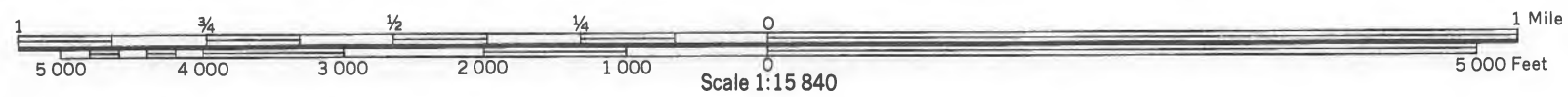


12355 000 FEET

GAUGA COUNTY, OHIO - SHEET NUMBER 5

1720 000 FEET (Joins sheet 6)

(Joins sheet 9)



Scale 1:15 840



This map is compiled on 1977 aerial photography by the Department of Agriculture, Soil Conservation Service and cooperating agencies. Coordinate grid ticks and land use symbols, if shown, are approximately positioned.

(Joins sheet 6) T. 9 N. T. 10 N.

730 000 FEET



GEAUGA COUNTY, OHIO - SHEET NUMBER 7

MGB 1 2390 000 FEET

MSA

MSB

(Joins sheet 3)

ASHTABULA COUNTY

1720 000 FEET



Scale 1:15 840

GEAUGA COUNTY, OHIO - SHEET NUMBER 8
R. 8 W.

8

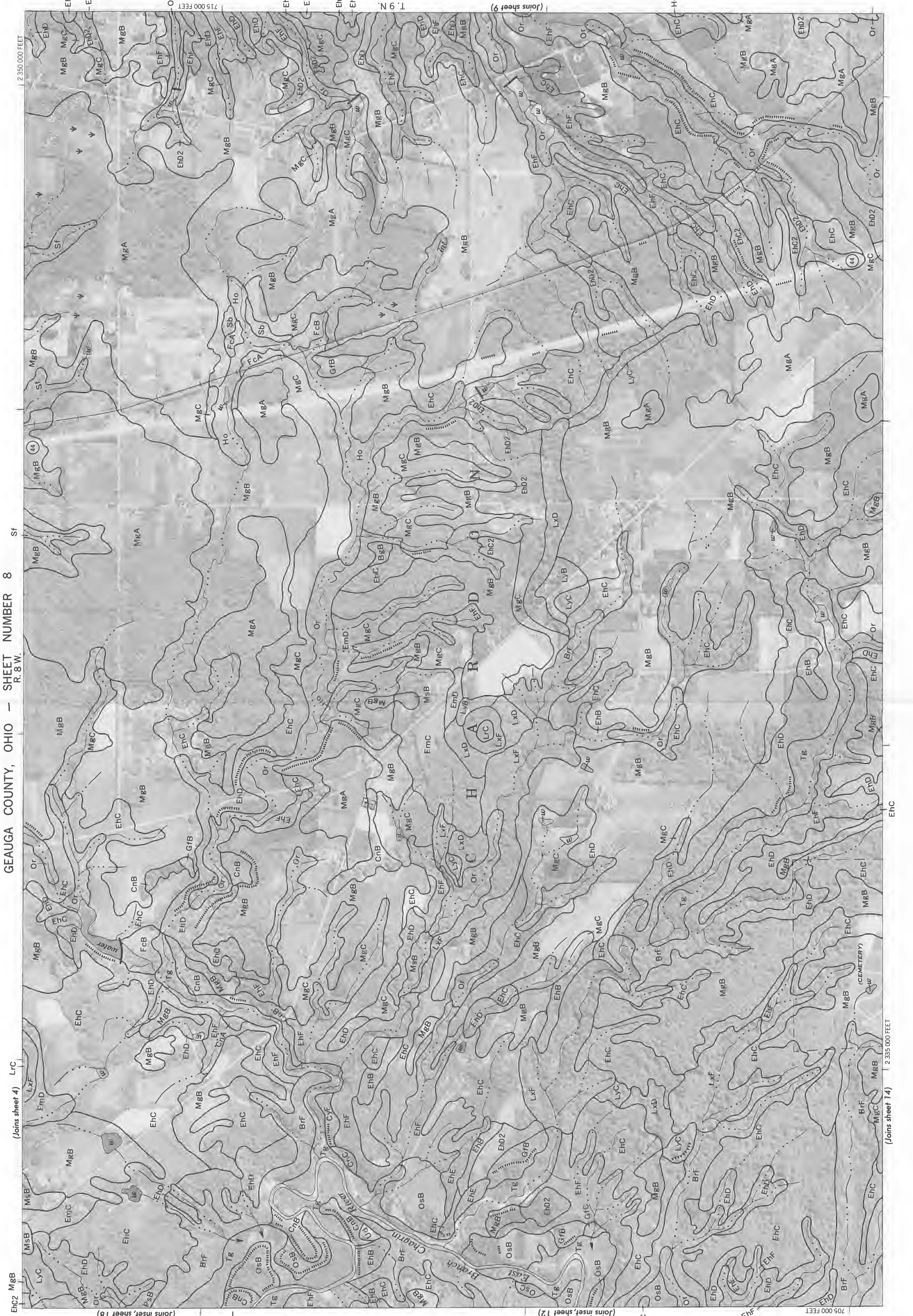
1 Mile
5 000 Feet

(Joins inset sheet 18)

(Joins sheet 4) LrC

Sf

2 350 000 FEET



705 000 FEET

(Joins inset sheet 12)

(Joins sheet 14)

2 335 000 FEET

EhC

(Joins sheet 14)

705 000 FEET

(Joins sheet 14)

2 335 000 FEET

EhC

(Joins sheet 14)

705 000 FEET

(Joins sheet 14)

2 335 000 FEET

EhC

(Joins sheet 14)

705 000 FEET

(Joins sheet 14)

2 335 000 FEET

EhC

(Joins sheet 14)

705 000 FEET

(Joins sheet 14)

2 335 000 FEET

EhC

(Joins sheet 14)

705 000 FEET

(Joins sheet 14)

2 335 000 FEET

EhC

(Joins sheet 14)

705 000 FEET

(Joins sheet 14)

2 335 000 FEET

EhC

(Joins sheet 14)

705 000 FEET

(Joins sheet 14)

2 335 000 FEET

EhC

(Joins sheet 14)

705 000 FEET

(Joins sheet 14)

2 335 000 FEET

EhC

(Joins sheet 14)

705 000 FEET

(Joins sheet 14)

2 335 000 FEET

EhC

(Joins sheet 14)

705 000 FEET

(Joins sheet 14)

2 335 000 FEET

EhC

(Joins sheet 14)

705 000 FEET

(Joins sheet 14)

2 335 000 FEET

EhC

(Joins sheet 14)

705 000 FEET

(Joins sheet 14)

2 335 000 FEET

EhC

(Joins sheet 14)

705 000 FEET

(Joins sheet 14)

2 335 000 FEET

EhC

(Joins sheet 14)

705 000 FEET

(Joins sheet 14)

2 335 000 FEET

EhC

(Joins sheet 14)

705 000 FEET

(Joins sheet 14)

2 335 000 FEET

EhC

(Joins sheet 14)

705 000 FEET

(Joins sheet 14)

2 335 000 FEET

EhC

(Joins sheet 14)

705 000 FEET

(Joins sheet 14)

2 335 000 FEET

EhC

(Joins sheet 14)

705 000 FEET

(Joins sheet 14)

2 335 000 FEET

EhC

(Joins sheet 14)

705 000 FEET

(Joins sheet 14)

2 335 000 FEET

EhC

(Joins sheet 14)

705 000 FEET

(Joins sheet 14)

2 335 000 FEET

EhC

(Joins sheet 14)

705 000 FEET

(Joins sheet 14)

2 335 000 FEET

EhC

(Joins sheet 14)

705 000 FEET

(Joins sheet 14)

2 335 000 FEET

EhC

(Joins sheet 14)

705 000 FEET

(Joins sheet 14)

2 335 000 FEET

EhC

(Joins sheet 14)

705 000 FEET

(Joins sheet 14)

2 335 000 FEET

EhC

(Joins sheet 14)

705 000 FEET

(Joins sheet 14)

2 335 000 FEET

EhC

(Joins sheet 14)

705 000 FEET

(Joins sheet 14)

2 335 000 FEET

EhC

(Joins sheet 14)

705 000 FEET

(Joins sheet 14)

2 335 000 FEET

EhC

(Joins sheet 14)

705 000 FEET

(Joins sheet 14)

2 335 000 FEET

EhC

(Joins sheet 14)

705 000 FEET

(Joins sheet 14)

2 335 000 FEET

EhC

(Joins sheet 14)

705 000 FEET

(Joins sheet 14)

2 335 000 FEET

EhC

(Joins sheet 14)

705 000 FEET

(Joins sheet 14)

2 335 000 FEET

EhC

(Joins sheet 14)

705 000 FEET

(Joins sheet 14)

2 335 000 FEET

EhC

(Joins sheet 14)

705 000 FEET

(Joins sheet 14)

2 335 000 FEET

EhC

(Joins sheet 14)

705 000 FEET

(Joins sheet 14)

2 335 000 FEET

EhC

(Joins sheet 14)

705 000 FEET

(Joins sheet 14)

2 335 000 FEET

EhC

(Joins sheet 14)

705 000 FEET

(Joins sheet 14)

2 335 000 FEET

EhC

(Joins sheet 14)

705 000 FEET

(Joins sheet 14)

2 335 000 FEET

EhC

(Joins sheet 14)

705 000 FEET

(Joins sheet 14)

2 335 000 FEET

EhC

(Joins sheet 14)

705 000 FEET

(Joins sheet 14)

2 335 000 FEET

EhC

(Joins sheet 14)

705 000 FEET

(Joins sheet 14)

2 335 000 FEET

EhC

(Joins sheet 14)

705 000 FEET

(Joins sheet 14)

2 335 000 FEET

EhC

(Joins sheet 14)

705 000 FEET

(Joins sheet 14)

2 335 000 FEET

EhC

(Joins sheet 14)

705 000 FEET

(Joins sheet 14)

2 335 000 FEET

EhC

(Joins sheet 14)

705 000 FEET

(Joins sheet 14)

2 335 000 FEET

EhC

(Joins sheet 14)

705 000 FEET

(Joins sheet 14)

2 335 000 FEET

EhC

(Joins sheet 14)

705 000 FEET

(Joins sheet 14)

2 335 000 FEET

EhC

(Joins sheet 14)

705 000 FEET

(Joins sheet 14)

2 335 000 FEET

EhC

(Joins sheet 14)

705 000 FEET

(Joins sheet 14)

2 335 000 FEET

EhC

(Joins sheet 14)

705 000 FEET

(Joins sheet 14)

2 335 000 FEET

EhC

(Joins sheet 14)

705 000 FEET

(Joins sheet 14)

2 335 000 FEET

EhC

(Joins sheet 14)

705 000 FEET

(Joins sheet 14)

2 335 000 FEET

EhC

(Joins sheet 14)

705 000 FEET

(Joins sheet 14)

2 335 000 FEET

EhC

(Joins sheet 14)

705 000 FEET

(Joins sheet 14)

2 335 000 FEET

EhC

(Joins sheet 14)

705 000 FEET

(Joins sheet 14)

2 335 000 FEET

EhC

(Joins sheet 14)

705 000 FEET

(Joins sheet 14)

2 335 000 FEET

EhC

(Joins sheet 14)

705 000 FEET

(Joins sheet 14)

2 335 000 FEET

EhC

(Joins sheet 14)

705 000 FEET

(Joins sheet 14)

2 335 000 FEET

EhC

(Joins sheet 14)

705 000 FEET

(Joins sheet 14)

2 335 000 FEET

EhC

(Joins sheet 14)

705 000 FEET

(Joins sheet 14)

2 335 000 FEET

EhC

(Joins sheet 14)

705 000 FEET

(Joins sheet 14)

2 335 000 FEET

EhC

(Joins sheet 14)

705 000 FEET

(Joins sheet 14)

2 335 000 FEET

EhC

(Joins sheet 14)

705 000 FEET

(Joins sheet 14)

2 335 000 FEET

EhC

(Joins sheet 14)

705 000 FEET

(Joins sheet 14)

2 335 000 FEET

EhC

</

GAUGA COUNTY, OHIO NO. 9

This map is compiled on 1977 aerial photography by the Department of Agriculture, Soil Conservation Service and cooperating agencies. Coordinate grid ticks and labels, if shown, are approximately positioned.

(Joins sheet 8)

T. 9 N.

715 000 FEET



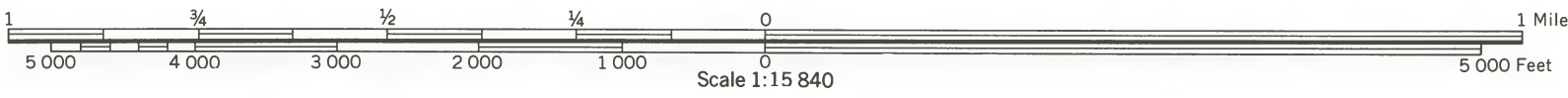
GAUGA COUNTY, OHIO - SHEET NUMBER 9

(Joins sheet 15)

(Joins sheet 5)

(Joins sheet 10)

710 000 FEET



Scale 1:15 840

9

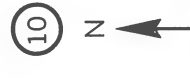
GEAUGA COUNTY, OHIO - SHEET NUMBER 10

R. 7 W. | R. 6 W.

2 385 000 FEET

MgB

EhB



Scale 1:15 840

10

(Joins sheet 9)

710 000 FEET

Ud

6

608

Hambden

WbB

WbA

Rsb

Rsc2

MgB

EhB

EhC

EhC2

MgA

MgB

EhB

EhC

EhC2

MgB

EhB

EhC

EhC2

MgB

EhB

EhC

EhC2

MgB

EhB

EhC

EhC2

MgB

EhB

EhC

EhC2

MgB

EhB

EhC

EhC2

MgB

EhB

EhC

EhC2

MgB

EhB

EhC

EhC2

MgB

EhB

EhC

EhC2

MgB

EhB

EhC

EhC2

MgB

EhB

EhC

EhC2

MgB

EhB

EhC

EhC2

MgB

EhB

EhC

EhC2

MgB

EhB

EhC

EhC2

MgB

EhB

EhC

EhC2

MgB

EhB

EhC

EhC2

MgB

EhB

EhC

EhC2

MgB

EhB

EhC

EhC2

MgB

EhB

EhC

EhC2

MgB

EhB

EhC

EhC2

MgB

EhB

EhC

EhC2

MgB

EhB

EhC

EhC2

MgB

EhB

EhC

EhC2

MgB

EhB

EhC

EhC2

MgB

EhB

EhC

EhC2

MgB

EhB

EhC

EhC2

MgB

EhB

EhC

EhC2

MgB

EhB

EhC

EhC2

MgB

EhB

EhC

EhC2

MgB

EhB

EhC

EhC2

MgB

EhB

EhC

EhC2

MgB

EhB

EhC

EhC2

MgB

EhB

EhC

EhC2

MgB

EhB

EhC

EhC2

MgB

EhB

EhC

EhC2

MgB

EhB

EhC

EhC2

MgB

EhB

EhC

EhC2

MgB

EhB

EhC

EhC2

MgB

EhB

EhC

EhC2

MgB

EhB

EhC

EhC2

MgB

EhB

EhC

EhC2

MgB

EhB

EhC

EhC2

MgB

EhB

EhC

EhC2

MgB

EhB

EhC

EhC2

MgB

EhB

EhC

EhC2

MgB

EhB

EhC

EhC2

MgB

EhB

EhC

EhC2

MgB

EhB

EhC

EhC2

MgB

EhB

EhC

EhC2

MgB

EhB

EhC

EhC2

MgB

EhB

EhC

EhC2

MgB

EhB

EhC

EhC2

MgB

EhB

EhC

EhC2

MgB

EhB

EhC

EhC2

MgB

EhB

EhC

EhC2

MgB

EhB

EhC

EhC2

MgB

EhB

EhC

EhC2

MgB

EhB

EhC

EhC2

MgB

EhB

EhC

EhC2

MgB

EhB

EhC

EhC2

MgB

EhB

EhC

EhC2

MgB

EhB

EhC

EhC2

MgB

EhB

EhC

EhC2

MgB

EhB

EhC

EhC2

MgB

EhB

EhC

EhC2

MgB

EhB

EhC

EhC2

MgB

EhB

EhC

EhC2

MgB

EhB

EhC

EhC2

MgB

EhB

EhC

EhC2

MgB

EhB

EhC

EhC2

MgB

EhB

EhC

EhC2

MgB

EhB

EhC

EhC2

MgB

EhB

EhC

EhC2

MgB

EhB

EhC

EhC2

MgB

EhB

EhC

EhC2

MgB

EhB

EhC

EhC2

MgB

EhB

EhC

EhC2

MgB

EhB

EhC

EhC2

MgB

EhB

EhC

EhC2

MgB

This map is compiled on 1977 aerial photography by the Department of Agriculture, Soil Conservation Service and cooperating agencies. Coordinate grid ticks and land use symbols, if shown, are approximately positioned.



(Joins sheet 10)

T. 9 N.

715 000 FEET

12 390 000 FEET

ENC2

ENC2

MGB

ENC2

ENC2

ENC2

ENC2

ENC2

ENC2

ENC2

ENC2

ENC2

ENC2

ENC2

GEAUGA COUNTY, OHIO - SHEET NUMBER 11

(Joins sheet 7)

ASHTABULA COUNTY

710 000 FEET



Scale 1:15 840

11

12 405 000 FEET

(Joins sheet 17)

This map is compiled on 1977 aerial photography by the Department of Agriculture, Soil Conservation Service and cooperating agencies. Coordinate grid ticks and land use numbers, if shown, are approximately positioned.

(Joins sheet 12) T. 8 N.

700 000 FEET



12 315 000 FEET

GEAUGA COUNTY, OHIO - SHEET NUMBER 13

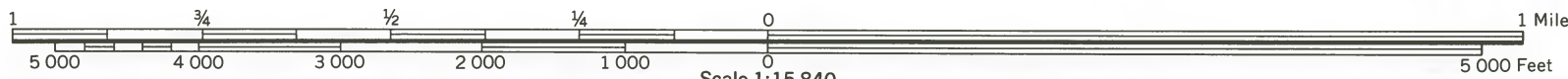
(Joins inset, sheet 12)

R. 8 W., E. 8 B.

(Joins sheet 19)

M&C 12 330 000 FEET

(Joins sheet 14)

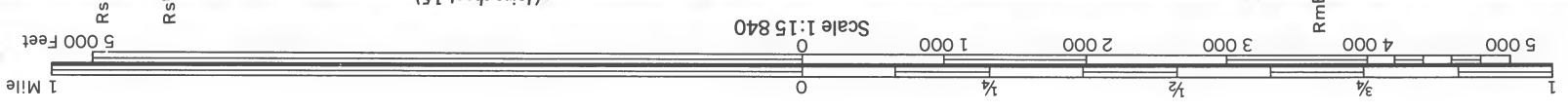


Scale 1:15 840

GEAUGA COUNTY, OHIO - SHEET NUMBER 16

(Joins sheet 10)

16



(Joins sheet 15)

(Joins sheet 22)

2 375 000 FEET

HSA

WbA

WbB

WbB

WbB

WbB

WbB

MgB

RSC

RSB

RSB

RSB

RSB

RSB

RSB

RSB

RSB

RSB

RSB

RSB

RSB

RSB

RSB

RSB

RSB

RSB

RSB

RSB

RSB

RSB

RSB

RSB

RSB

RSB

RSB

RSB

RSB

RSB

RSB

RSB

RSB

RSB

RSB

RSB

RSB

RSB

RSB

RSB

RSB

RSB

RSB

RSB

RSB

RSB

RSB

RSB

RSB

RSB

RSB

RSB

RSB

RSB

RSB

RSB

RSB

RSB

RSB

RSB

RSB

RSB

RSB

RSB

This map is compiled on 1977 aerial photography by the U.S. Department of Agriculture, Soil Conservation Service and cooperating agencies. Coordinate grid ticks and land use symbols shown are approximately positioned.

GEAUGA COUNTY, OHIO NO. 16